



## PIPE TO RAIL ADAPTER

The DR Pipe To Rail Adapter mounts DR Standard Rails or DR Lite Rails to pipe foundation structures, and comes with a galvanized 2" U-bolt and 3/8" SS flange nut. An SS U-bolt and 3" U-bolt are also available. Requiring only 7 parts and 1 wrench to install, our adapter offers flexibility and dependability to accommodate the majority of solar panels. The competitive price-per-watt and overall estimated labor savings could cut up to 10k of cost on a 250kW project. Available in clear and black finishes.

## ADVANTAGES

- Compatible with Dual Rack Standard and Lite mounting systems
- Simple to install
- Compatible with the majority of solar panel brands
- Easy installation saves time and labor costs
- Great price point value
- Available in clear and black finishes
- 10 Year limited warranty
- Conforms to UL STD 2703 and Class A Fire Rated

### Component List

Material	QTY
Pipe to Rail Adapter	01
3/8" U Bolt	01
3/8" Hex Bolt	03
3/8" Flange Nut	05

### Ordering Specifics

	Package	Small Box	Big Box
Standard Pack	10 pc	30 pc	120 pc
Weight	0.167 lbs		

### Installation Guide

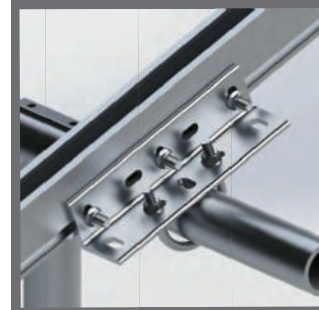
For detailed instructions please refer to the Dual Rack installation guide



1. With the 3/8" U Bolt harnessing the piping, place the Pipe to Rail Adapter over the U Bolt threads.



2. Secure the U Bolt with two 3/8" flange nuts. Next, mark three holes in the rail with proper spacing and insert the three 3/8" hex bolts through the rail.



3. Secure the three 3/8" hex bolts with the 3 remaining 3/8" flange nuts and tighten accordingly.

### Product Line

Item #	Product Name
DR-CPRA-01	DR Pipe to Rail Adapter - Clear
DR-CUB-01	DR U Bolt - Clear



ETL CLASSIFIED



Intertek  
5000799

Conforms to UL SUB 2703